

# RAD Access Solutions for Carrier and Corporate Networks

Sydney, December 2009

Access

Itzik Swissa  
MD RAD Australia



data communications

Unique Access Solutions

# RAD Data Communications

- Established in 1981.
- Design & manufacturing in Israel
- 1,100 employees worldwide
- Offices in Argentina, Australia, Brazil, Canada, China, India, France, Germany, Japan, Russia, UK, and US
- Over 250 access solutions
- International sales via partners in 165 countries



# The RAD Group

**No. of employees = 3,750**  
**Sales = 1B**

The Access Company  
 Established: 1981

Hi-end Adapters for Servers  
 Established: 1987

Network Test Solutions  
 Established: 1991

Video Conference Solutions over IP  
 Established: 1992

Wireless Mobile Backhaul  
 Established: 1996

Group Distributor in Israel

- Coordinated Strategy
- Shared Marketing partners
- Joint Development & Technology Sharing

Integrated Application Delivery  
 Established: 1997

Mobile TV Transmitters  
 Established: 2006

Established: 1997

x86 Multicore Systems  
 Established: 2005

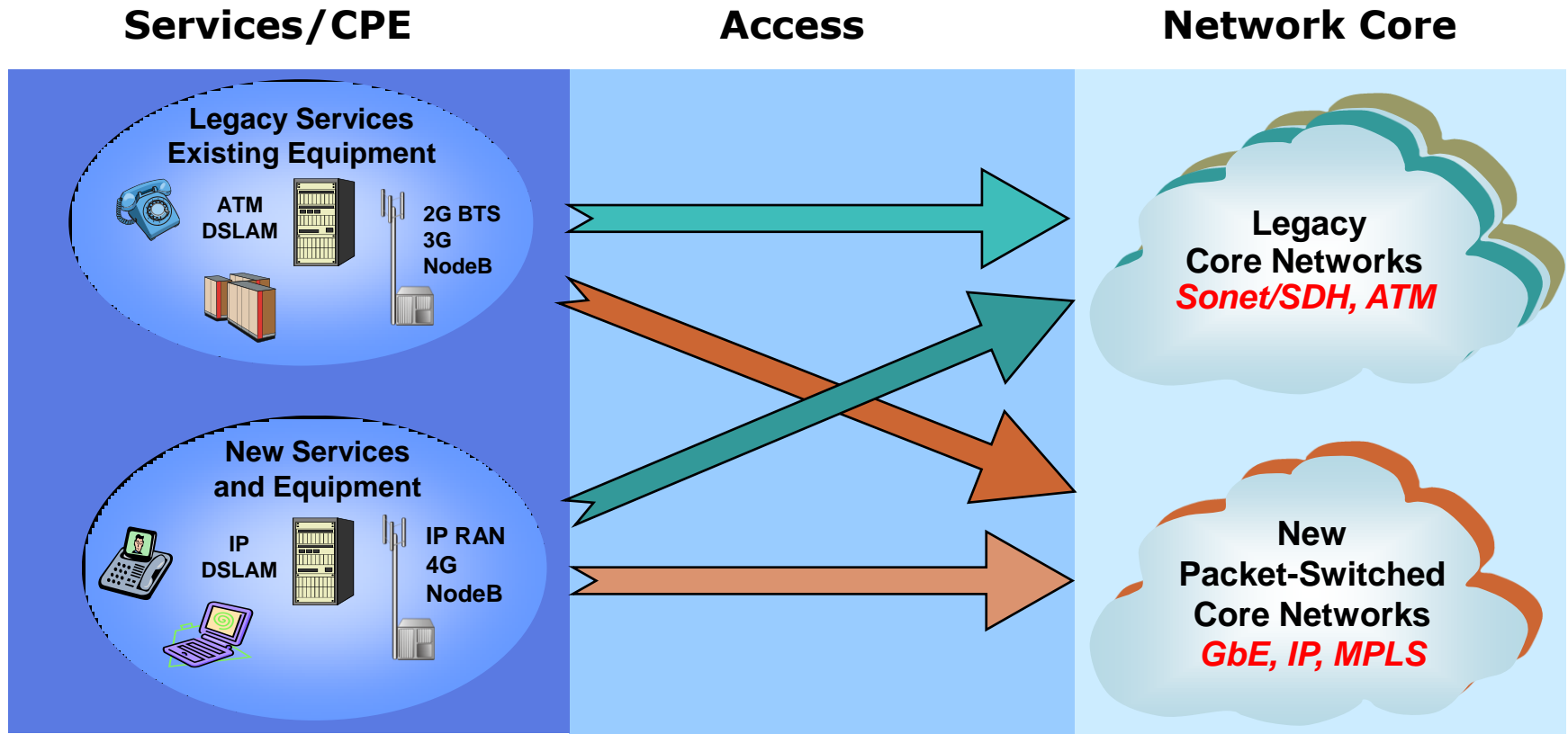
HD Telephony Solutions  
 Established: 2005

Wireless USB Chipset Solutions  
 Established: 2001

CWDM and DWDM Solutions  
 Established: 2000

iSCSI SAN Solutions  
 Established: 2000

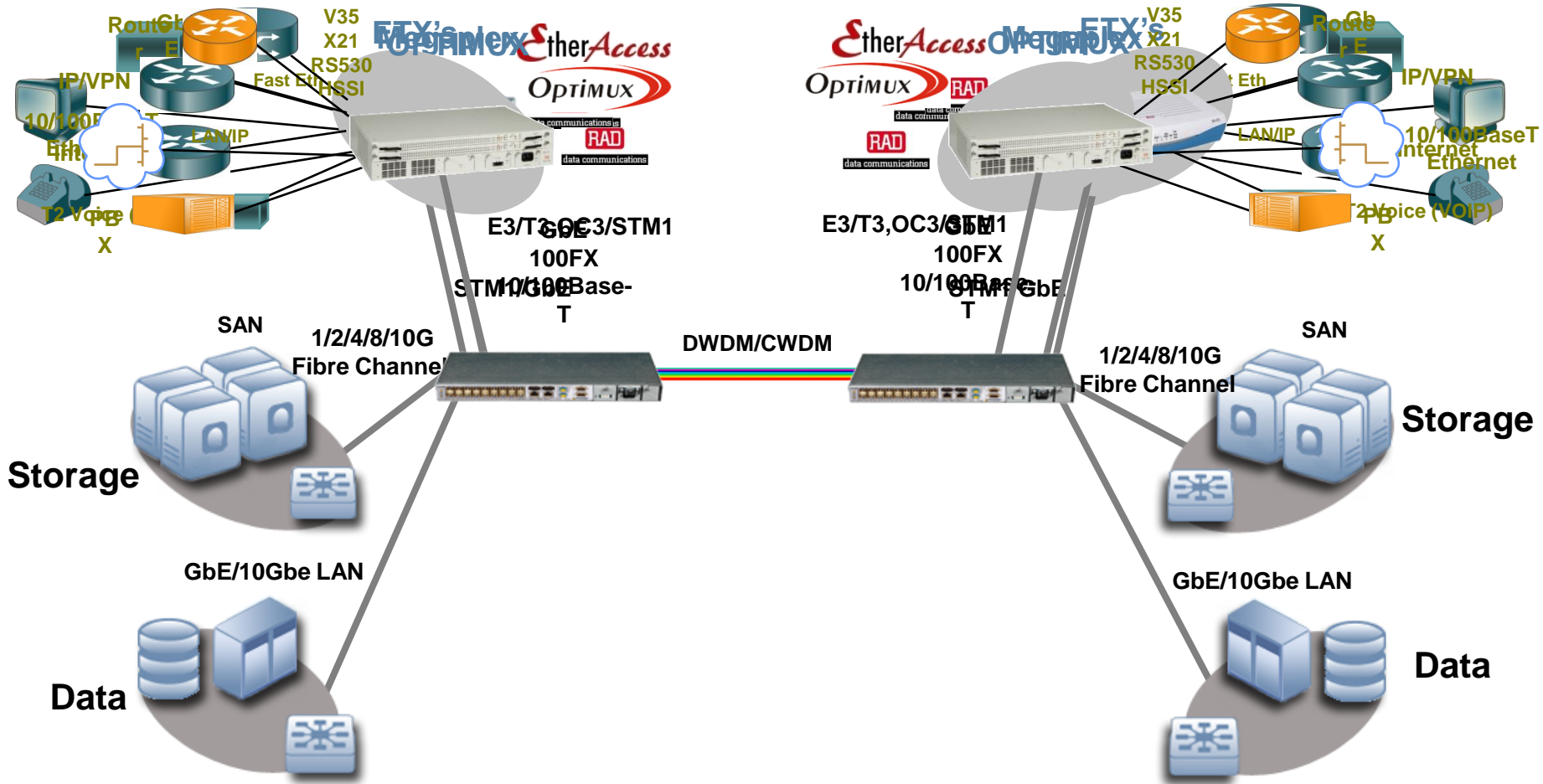
# RAD Products Strategy



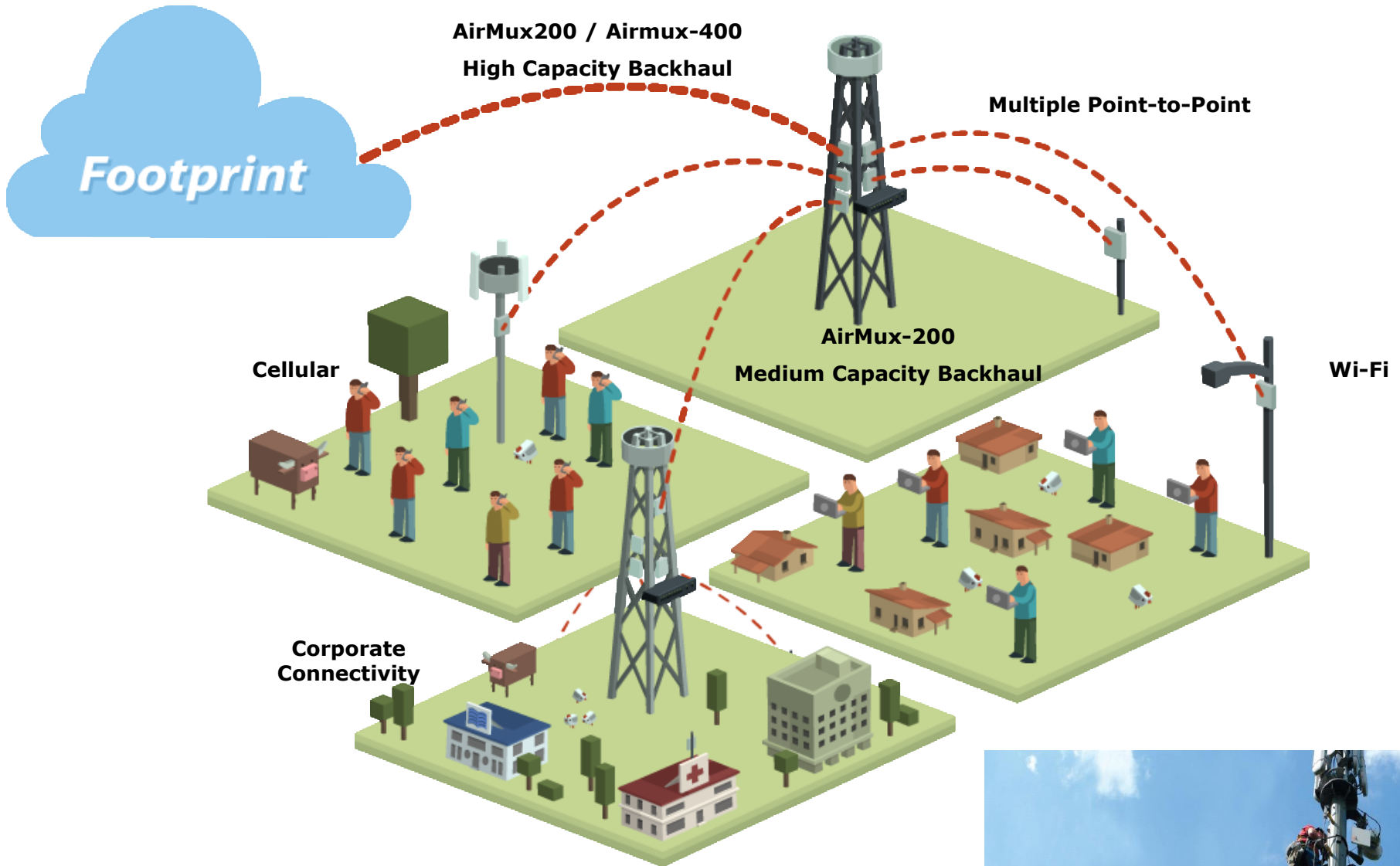
- Continued support of Legacy Services over legacy networks
- Legacy Services over NGN - Ethernet/MPLS/IP backbones
- Ethernet Network Termination Units for demarcation and QOS
- New Ethernet services over existing (PDH/SDH/ATM) backbones

# Fiber...xWDM...xPON

Any fiber technology...



# Wireless architecture



# Why Choose RAD?

- Broad technology base – for long-term stability
- Flexibility - solutions to specific customer needs
- Responsiveness - quick reaction to Market Needs
- Expertise in international markets – compliance with standards, homologation, FCC/UL/CE.
- Commitment to quality and the environment – ISO 9000, ISO 14000, RoHS, WEEE.  
Winner of Israel national quality award
- Long term partnership with customers, channels, suppliers and employees



# Worldwide Customer Base by Industry Selected References



data communications

## Carriers and Service Providers

AT&T  
Bell Canada  
Bezeq  
British Telecom  
China Telecom  
Deutsche Telekom  
Embratel  
France Telecom  
KDDI  
KPN  
MCI  
NTT  
Optus  
Softbank Telecom  
Singtel  
Sprint  
Telefonica  
Telstra  
Telmex  
Telus  
Verizon  
VTN

## Mobile Operators

Bharti Telecom  
Hutchison  
KPN  
Orange  
SMART  
Softbank Mobile  
SFR  
Tele2  
TeliaSonera  
T-Mobile  
V-Mobile  
Vodafone

## Vendors

Alcatel - Lucent  
Cisco  
Ericsson  
Huawei  
Motorola  
Nokia - Siemens  
Nortel

## Transportation

BaneTele  
Boeing  
Deutsche Bundesbahn  
Highway Authority - UK  
Iberia  
NYCT  
RailTel  
RENFE  
SITA  
SNCF  
SMRT  
Swiss Railway

## Utilities

Alstom Power  
Caltex  
China Light & Power  
Eletronorte  
H.K. Electric Company  
Hydro Quebec  
Novosibirsk Energo  
Rosneft

## Government and Military

Coast Guard - Canada  
IDF - Israel  
MINDEF - Singapore  
French Defense Ministry  
NASA  
NATO  
QLD - Australia  
Space Agency - Russia  
US Air Force

## Financial

Bank of China  
Creditanstalt  
Credit Lyonnais  
Hua-Nan Comm. Bank  
JP Morgan  
Lloyds of London  
Merrill Lynch  
Rabobank  
Raiffeisen Bank  
Union Bank



**Thank you for your attention**

thank you



data communications

[www.rad.com](http://www.rad.com)